

Catalogue Butterfly valves

April 2010

Pressure Piping Systems
for Water Applications

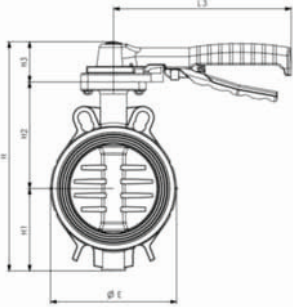


PVC-U butterfly valves & kits

Lever-operated butterfly valve PVC-U With EPDM/SANTOPRENE™ gaskets

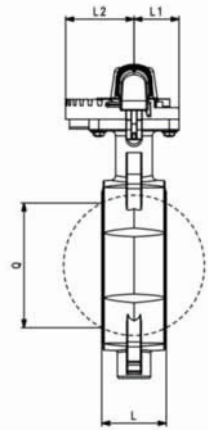


- On request:
 - stem and guide bushing in stainless steel
 - bare shaft + fixing actuator bracket



d [mm]	DN [mm]	DN [inch]	PN	Code	SP	GP	kg
75	65	2 ½	10	VFA02D750	1	-	1.300
90	80	3	10	VFA02D900	1	-	1.294
110	100	4	10	VFA02D910	1	-	1.500
125 - 140	125	5	10	VFA02D920	1	-	2.300
160	150	6	10	VFA02D940	1	-	3.380
200 - 225	200	8	6	VFA02D960	1	-	5.400

d [mm]	E [mm]	Q [mm]	H [mm]	H1 [mm]	H2 [mm]	H3 [mm]	H4 [mm]	L [mm]	L1 [mm]	L2 [mm]	L3 [mm]
75	112	46	246	76	115	55	43	46	46	70	220
90	128	64	267	92	120	55	43	48	46	70	220
110	152	84	291	106	130	55	43	54	46	70	220
125 - 140	177	108	321	116	150	55	43	63	46	70	250
160	212	133	356	131	169	55	43	63	46	70	250
200 - 225	260	180	433	163	209	61	43	74	46	70	282



PF 2 02 960 010

Lever-operated butterfly valve PVC-U With free flanges kit With EPDM/SANTOPRENE™ gaskets



d [mm]	DN [mm]	DN [inch]	PN	Code	SP	GP	kg
75	65	2 ½	10	VFA02D75K	1	-	4.650
90	80	3	10	VFA02D90K	1	-	4.879
110	100	4	10	VFA02D91K	1	-	5.858
125	125	5	10	VFA02D92K	1	-	7.100
140	125	5	10	VFA02D93K	1	-	10.850
160	150	6	10	VFA02D94K	1	-	11.930
200	200	8	6	VFA02D96K	1	-	13.950
225	200	8	6	VFA02D97K	1	-	13.950

PF 2 02 960 010



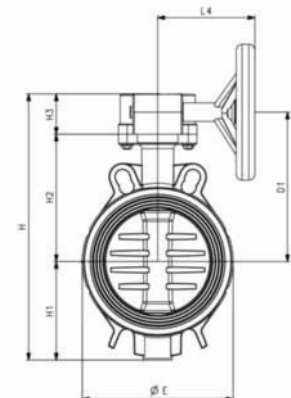


Butterfly valve reduction gear With handwheel PVC-U With EPDM/SANTOPRENE gaskets



* with metal reduction gear

d [mm]	DN [mm]	DN [inch]	PN	Code	SP	GP	kg
75	65	2 ½	10	VFA11D750	1	-	1.500
90	80	3	10	VFA11D900	1	-	1.760
110	100	4	10	VFA11D910	1	-	1.916
125 - 140	125	5	10	VFA11D920	1	-	2.725
160	150	6	10	VFA11D940	1	-	3.600
* 200 - 225	200	8	6	VFA11D960	1	-	7.600



d [mm]	E [mm]	Q [mm]	H [mm]	H1 [mm]	H2 [mm]	H3 [mm]	H4 [mm]	L [mm]	L1 [mm]	L2 [mm]	L3 [mm]	L4 [mm]	D [mm]
75	112	46	240	76.0	115.0	49	43	46	71	46	92	113	160
90	128	64	261	92.0	120.0	49	43	48	71	46	92	113	160
110	152	84	285	106.0	130.0	49	43	54	71	46	92	113	160
125 - 140	177	108	315	116.0	150.0	49	43	63	71	46	92	113	160
160	212	133	350	131.5	169.5	49	43	69	71	46	92	113	160
* 200 - 225	260	180	421	163.0	209.0	49	43	74	71	46	92	113	160

d [mm]	D1 [mm]
75	142.00
90	147.00
110	157.00
125 - 140	177.00
160	196.50
* 200 - 225	236.00

PF 2 02 960 010



Kit including backing flanges PVC-U Stub and screws

• (*) On request

d [mm]	DN [mm]	DN [inch]	PN	Code	SP	GP	kg
75	65	2 ½	10	XVFFLIZ75	1	-	3.350
90	80	3	10	XVFFLIZ90	1	-	3.585
110	100	4	10	XVFFLIZ91	1	-	4.358
125	125	5	10	XVFFLIZ92	1	-	4.800
140	125	5	10	XVFFLIZ93	1	-	4.800
160	150	6	10	XVFFLIZ94	1	-	7.500
* 200	200	8	6	XVFFLIZ96	1	-	8.550
* 225	200	8	6	XVFFLIZ97	1	-	8.550

PF 2 02 960 010

Spare parts for butterfly valves

Handwheel



Suitable for VFA

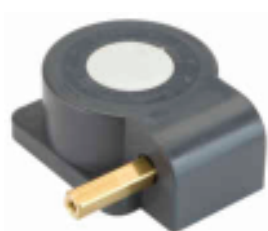
d [mm]	DN [mm]	Code	SP	GP
75 - 160	65 - 150	3V0VFVD01	1	10



Coloured handle

Suitable for VFA02D

d-d [mm]	DN-DN [mm]	DN-DN [inch]	Code	SP	GP
75 - 110	65 - 100	2 ½ - 4	3V0VFM04	1	15
125 - 160	125 - 150	5 - 6	3V0VFM05	1	15
200 - 225	200 - 200	8 - 8	3V0VFM06	1	10



Handwheel gear box kit

Suitable for VFA

d-d [mm]	DN-DN [mm]	DN-DN [inch]	Code	SP	GP
75 - 110	65 - 100	2 ½ - 4	3V0VFRG01	1	20
125 - 160	125 - 150	5 - 6	3V0VFRG02	1	20



Disk seal

Suitable for VFA02D and VFA11

- (*) Traded items

d [mm]	DN [mm]	DN [inch]	EPDM Code	SP	GP
* 75	65	2 ½	2G0VF1OD75	-	-
* 90	80	3	2G0VF1OD90	-	-
* 110	100	4	2G0VF1OD91	-	-
* 125 - 140	125	5	2G0VF1OD92	-	-
* 160	150	6	2G0VF1OD94	-	-
* 200 - 225	200	8	2G0VF1OD96	-	-

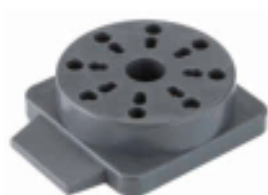


External gasket kit in EPDM/SANTOPRENE™

Suitable for VFA02D and VFA11

- (*) Traded items

d [mm]	DN [mm]	DN [inch]	Code	SP	GP
* 75	65	2 ½	2G0VF1ED75	-	-
* 90	80	3	2G0VF1ED90	-	-
* 110	100	4	2G0VF1ED91	-	-
* 125 - 140	125	5	2G0VF1ED92	-	-
* 160	150	6	2G0VF1ED94	-	-
* 200 - 225	200	8	2G0VF1ED96	-	-



Actuator fixing bracket

Suitable for VFA

DN [mm]	Code	SP	GP
65 - 150	3V0VFSG01	1	30
200	3V0VFSG02	1	30

PVC-U Actuated Butterfly Valves

The range of new VFA valves are also available in pneumatic and electric actuated versions from DN 65 to DN 200. The design and operating features of the new VFA valves allow extremely reduced operating torques, supporting the choice of compact, cost effective actuators.

VFK50 Butterfly valve with 24V AC electric actuator EPDM/SANTOPRENE™ gaskets

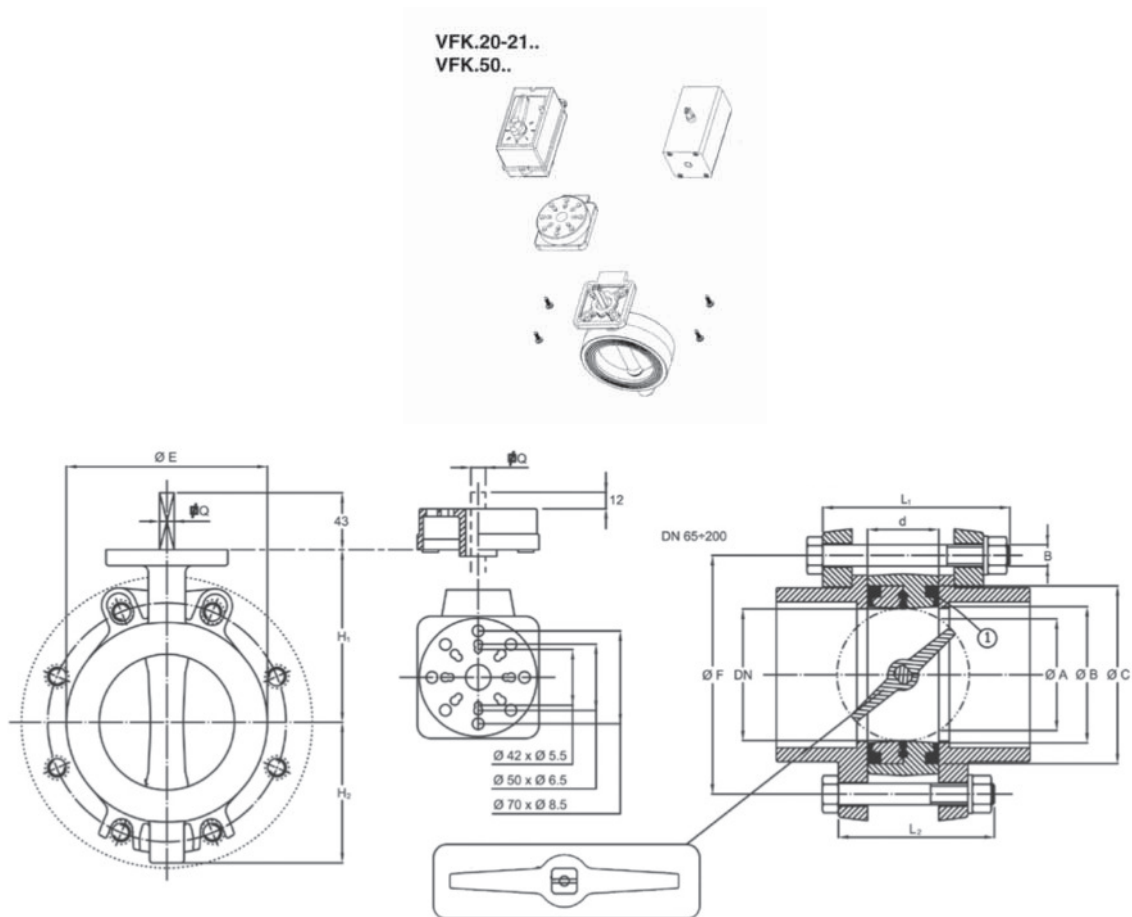
Electric actuator features:

- Power supply: 24/230V at 50 Hz.
- Operating time: DN 65-80: 50 sec
DN 100-125: 1 min.
DN 150-200: 150 sec.
- Fail-safe open: standard
- Auxiliary contacts: 2 standard
- Protection: IP 65
- Connection standard: ISO 5211

VFK2.... Butterfly valve with pneumatic actuator EPDM/SANTOPRENE™ gaskets

Pneumatic actuator features:

- Versions: single/double-acting
- Power supply: filtered compressed air, not necessarily lubricated
- Operating pressure: 6 bar
- Operating temperature for actuator only: from 0°C to + 80°C (from - 20°C to + 80°C in dry air)
- Connection standard: ISO 5211
- Angle of rotation: 90°C
- Namur connector for accessories



	ISO UNI-DIN PN 10	ISO UNI-DIN PN 16	BS4504 TAB. 16/3 TAB. 10/3	ANSI 150 lbs	JIS	DN	G	D	ØA	ØB	ØC	d	L ₁	L ₂	B	Ø E	Q	H ₁	H ₂
ØF	145	145	145	140	140	65	2" ½	75	49	73	98	46	130	120	16	112	11	115	76
	160	160	160	152	-	80	3"	90	64	83	112	48	130	120	16	128	11	120	86
	180	180	181	190	-	100	4"	110	85	103	134	54	150	120	16	152	11	130	106
	210	210	210	216	210	125	5"	125/140	108	129	158	63	160	160	16	177	14	150	116
	240	240	241	241	240	150	6"	160	134	154	190	69	180	180	20	212	14	170	132
	295	295	295	298	-	200	8"	200/225	180	198	232	72	200	200	20	262	17	209	163

PVC-U actuated butterfly valves

Butterfly valve electric 24V AC PVC-U With EPDM/SANTOPRENE™ gaskets



PF 2 02 959 010

d [mm]	DN [mm]	DN [inch]	PN	Code	SP	GP	kg
75	65	2 ½	10	VFK50D750	-	-	1.750
90	80	3	10	VFK50D900	-	-	1.750
110	100	4	10	VFK50D910	-	-	1.916
125 - 140	125	5	10	VFK50D920	-	-	0.001
160	150	6	6	VFK50D940	-	-	0.001
* 200 - 225	200	8	6	VFK50D960	-	-	0.001

Butterfly valve pneumatic PVC-U With EPDM/SANTOPRENE™ gaskets



PF 2 02 959 010

d [mm]	DN [mm]	DN [inch]	PN	ACTING TYPE	Code	SP	GP	kg
75	65	2 ½	10	DOUBLE	VFK20D750	-	-	2.600
90	80	3	10	DOUBLE	VFK20D900	-	-	2.600
110	100	4	10	DOUBLE	VFK20D910	-	-	3.016
125 - 140	125	5	10	DOUBLE	VFK20D920	-	-	0.001
160	150	6	6	DOUBLE	VFK20D940	-	-	0.001
200 - 225	200	8	6	DOUBLE	VFK20D960	-	-	6.700
75	65	2 ½	10	SINGLE	VFK21D750	-	-	2.600
90	80	3	10	SINGLE	VFK21D900	1	1	0.001
110	100	4	10	SINGLE	VFK21D910	-	-	0.001
125 - 140	125	5	10	SINGLE	VFK21D920	-	-	4.516
160	150	6	6	SINGLE	VFK21D940	-	-	0.001
200 - 225	200	8	6	SINGLE	VFK21D960	-	-	9.250